




2018 PRODUCT GUIDE

idlehandsprintco.bigcartel.com

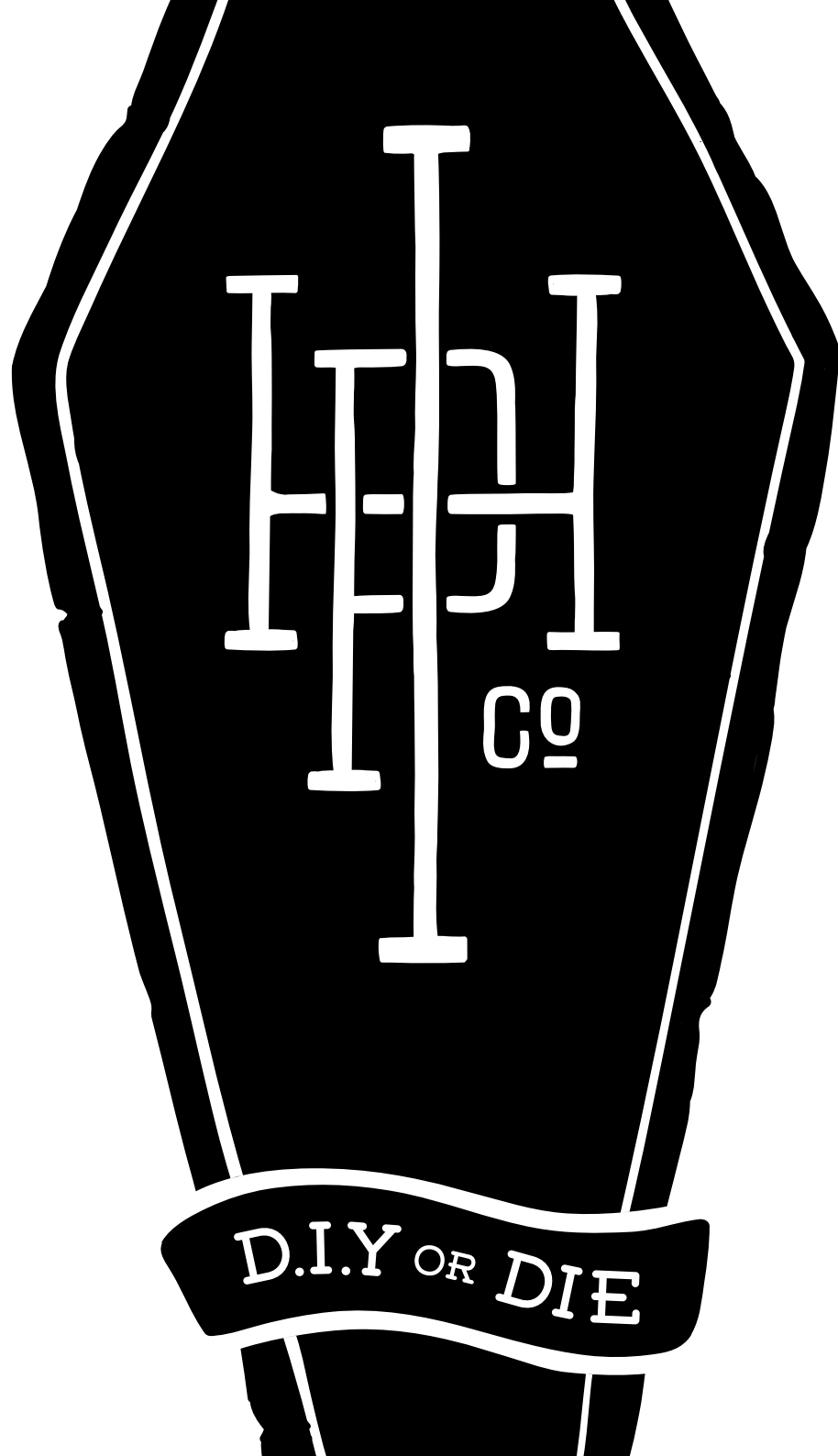
idlehandsprintco@gmail.com

 [@idlehandsprintco](https://www.instagram.com/idlehandsprintco)

[#idlehandsprintco](https://www.instagram.com/idlehandsprintco)



2018



APPAREL / ACCESSORIES / ART

Idle Hands Are The Devil's Playground

ABOUT

Idle Hands Print Co. is a unisex streetwear, accessory & art brand based in Geelong West out of the small home studio of illustrator/designer/artist Jaclyn Poole.

Idle Hands is all about making the kind of art you want to see in the world. From our homemade custom IHPC printing press to every one of our silk screens, we've literally built this brand from the ground up with our bare hands and we pride ourselves on the self-taught, d.i.y ethics that got us here. Every original Idle Hands design is dreamt up, sketched out, finished, vectorized and printed right here, by hand, in our studio.

No middlemen, no bosses, no sponsors, no committees and no time-wasters.

IHPC is the kid up the back of class sketching away, dreaming of bigger things. We *are* and we're *for* the underdogs, the loners, the misunderstood, the artists and the dreamers but most of all; the doers. We value quality over quantity, we follow our instincts not others, we trust our guts and we get shit done. Real recognises real - join the crew.



OG FLAG TEE

S, M, L, XL, XXL

LEFT CHEST POCKET + BACK PRINT

100% COMBED COTTON

MID WEIGHT (180GSM)

REGULAR FIT, PRE-SHRUNK

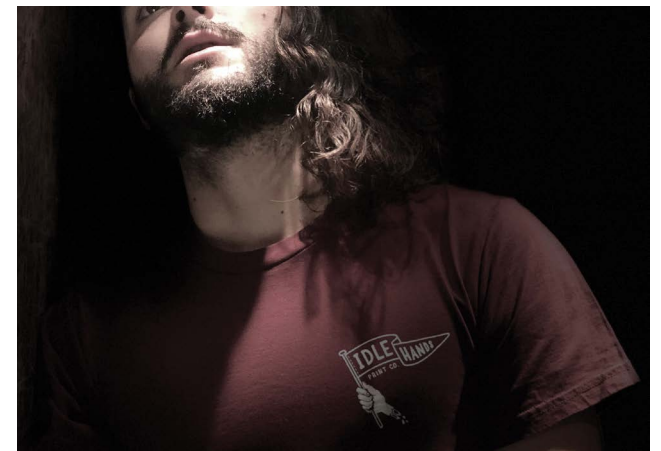
CREWNECK



MAROON



NAVY



LONE WOLF TEE

S, M, L, XL, XXL

LEFT CHEST POCKET +
BACK PRINT
100% COMBED COTTON
MID WEIGHT (180GSM)
REGULAR FIT
PRE-SHRUNK
CREWNECK



BLACK





REEF SHARK TEE

S, M, L, XL, XXL



LEFT CHEST POCKET + BACK PRINT
100% COMBED COTTON
MID WEIGHT (180GSM)
REGULAR FIT, PRE-SHRUNK
CREWNECK

☐ WHITE



IDLE HANDS TEE

Japanese kanji translates to "lazy person's hands"

S, M, L, XL, XXL

LEFT CHEST POCKET + BACK PRINT

100% COMBED COTTON

MID WEIGHT (180GSM)

REGULAR FIT, PRE-SHRUNK

CREWNECK

なまけものの手

—— 印刷会社 ——

IDLE HANDS PRINT CO.

BLACK





ALL SEEING EYE TEE

S, M, L, XL, XXL

LEFT CHEST POCKET + BACK PRINT

100% COMBED COTTON

MID WEIGHT (180GSM)

REGULAR FIT, PRE-SHRUNK CREWNECK



BLACK



GREY MARLE



ALL SEEING EYE ZIP HOOD

MID-WEIGHT

XS, S, M, L, XL



LEFT CHEST POCKET PRINT
100% COTTON
ANTI-PILL FRENCH
TERRY FLEECE
MID WEIGHT (320 GSM)

WHITE DRAWCORD,
SLIM FIT, ZIP HOOD,
RAGLAN SLEEVES,
KANGAROO POCKETS,
YKK METAL ZIPPER



BLACK





IHPC ART DEPT.

S, M, L, XL

FRONT PRINT
100% COTTON
REGULAR FIT, BASEBALL RAGLAN
SCOOPED HEM, 3/4 SLEEVES

 NAVY/WHITE
BASEBALL TEE

S, M, L, XL, XXL

FRONT PRINT
75% COTTON/25% POLY
MID WEIGHT (180GSM)
REGULAR FIT CREWNECK

 GREY W/
RED INK TEE



OUIJA BOARD DRINK COASTERS

SET OF 4

HAND-PRINTED, HANDMADE OUIJA BOARD DRINK COASTERS. EACH COASTER IS INDIVIDUALLY PRINTED ON A WOODEN BOARD AND COATED WITH A THICK, PROTECTIVE, EASY-TO-CLEAN EPOXY RESIN, WITH A FELT BACKING TO PROTECT TABLE SURFACES.

PACKAGED IN A HAND-PRINTED AND FOLDED CUSTOM STORAGE BOX.

COASTER SIZE: 11.3mm x 9.4 mm

WEIGHT (set of 4 in box): approx 210gm – 220gm



CAMO DUFFEL BAG

LIMITED EDITION

MID-WEIGHT (400gsm)

CYLINDRICAL: 59cm x 30cm

100% POLYESTER

53 LITRE CAPACITY

ONE LARGE MAIN COMPARTMENT

ONE EXTERNAL POCKET

ONE INTERIOR POCKET

YKK ZIPPER

REINFORCED HANDLES

ONE REMOVABLE SHOULDER STRAP

HAND-PRINTED IHPC LABEL








Idle Hands Are The Devil's Playground

HANDPRINTED APPAREL, ACCESSORIES & ART

ORDER/CONTACT

idlehandsprintco.bigcartel.com

email JAC at idlehandsprintco@gmail.com

 [@idlehandsprintco](https://www.instagram.com/idlehandsprintco)

join the crew [#idlehandsprintco](https://www.instagram.com/idlehandsprintco)

IHPC IS DESIGNED + PRINTED IN GEELONG WEST, AUSTRALIA

